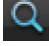
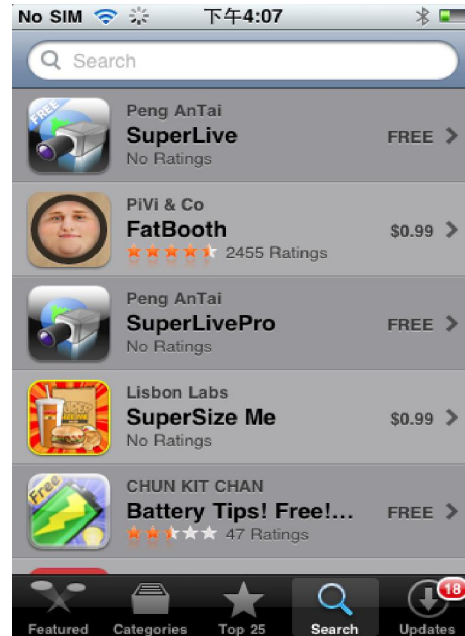


Appendix 1. Software installation for SuperLivePro (iPhone/iPad)

1. Install from iPhone.

Step 1. Open App Store in your iPhone

Step 2. Enable “search”  function to search “SuperLivePro”



Step 3: Click SuperLivePro, enter into “introduce” interface and then click “FREE”, it will change into “INSTALL”



Step 4: Input iTunes Store password and then click “OK”, the software will be installed automatically.

Note: if it was the first time for user to operate, please enter user ID; if there is no Store account, user needs to apply one.


2. Install from PC.

Step 1: Install iTunes store in PC and then login

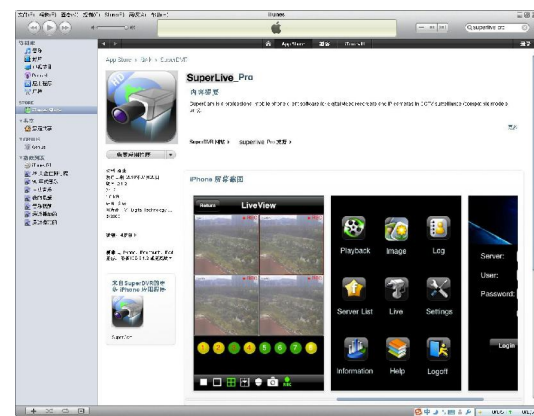
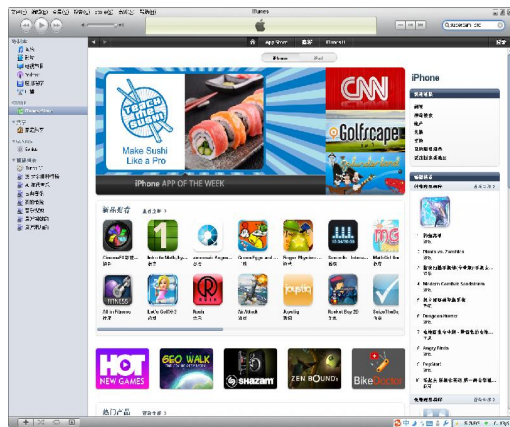


Step 2: Connect iPhone to PC



Step 3: Enable “search”  function to search “SuperLivePro”

Step 4: Click “free application” button



Step 5: Input apple ID and password, then click “acquire”

Step 6: Tick off “synchronously apply program” and “SuperLivePro”, and then click “apply” button



Appendix 2. Instruction for SuperLivePro 1.0

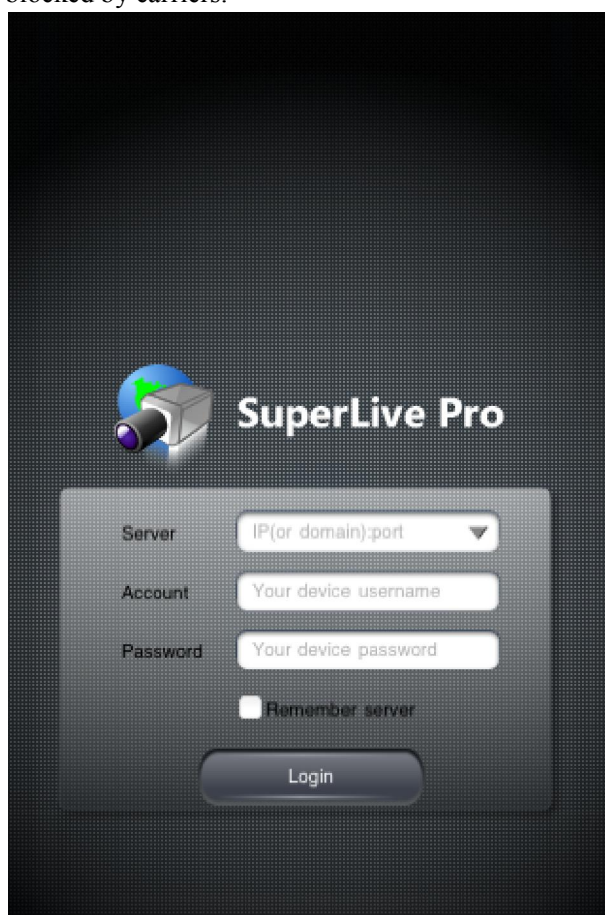
1. Login interface

Input server's IP address (or domain name), user name and password

Click "Remember server" to save the setting; click ▼ button user can quick input saved server address, user name and password.;

If failed connecting, please check below points;

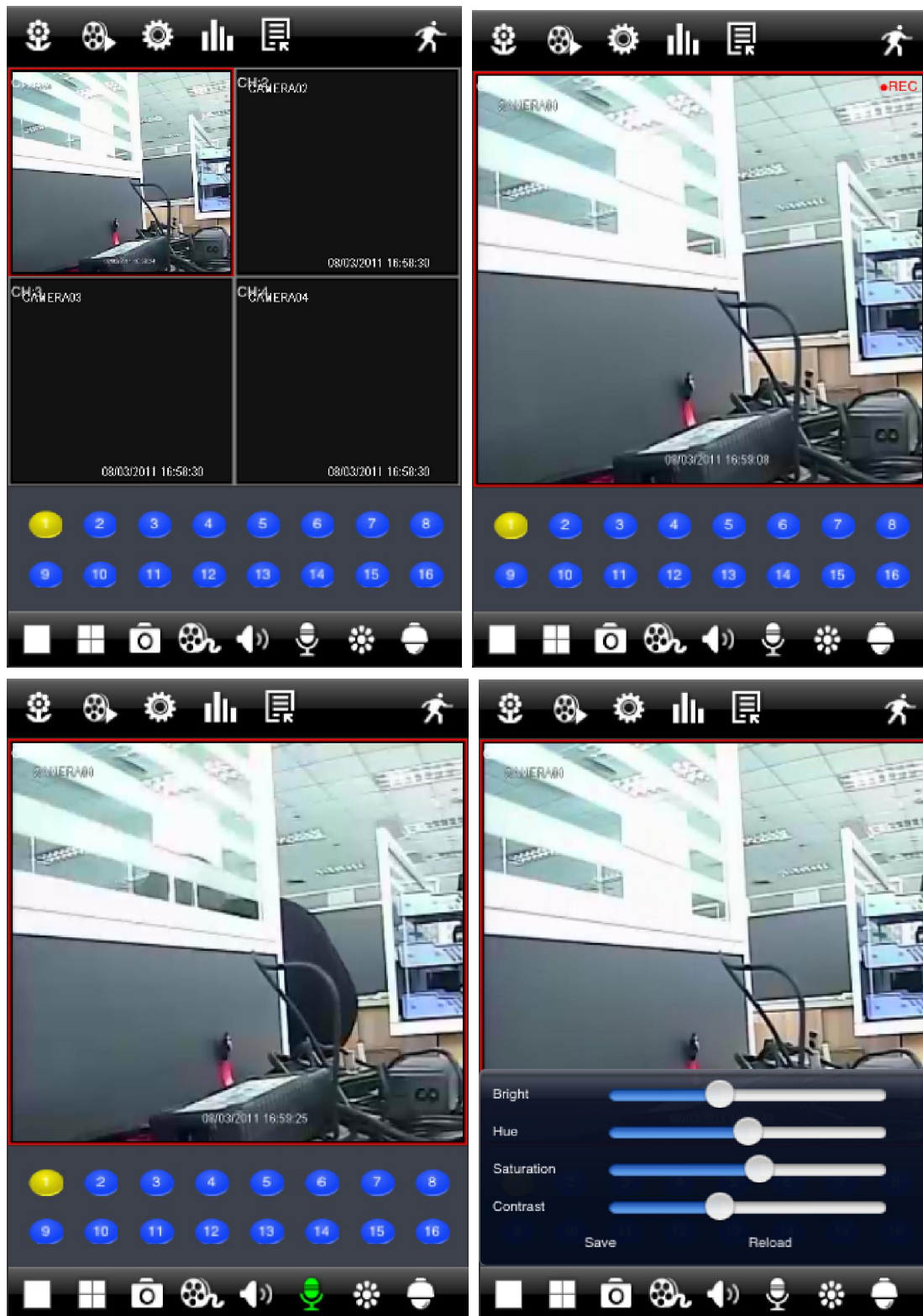
- 1.) Check the network connection to your iPad/iPhone.
- 2.) Check if the server address input is invalid.
- 3.) Check the username and password, please note that they are case sensitive; and make sure no spacekey entered in each line;
- 4.) Try changing the DVR's HTTP port and DATA port; in some countries, some ports may be blocked by carriers.

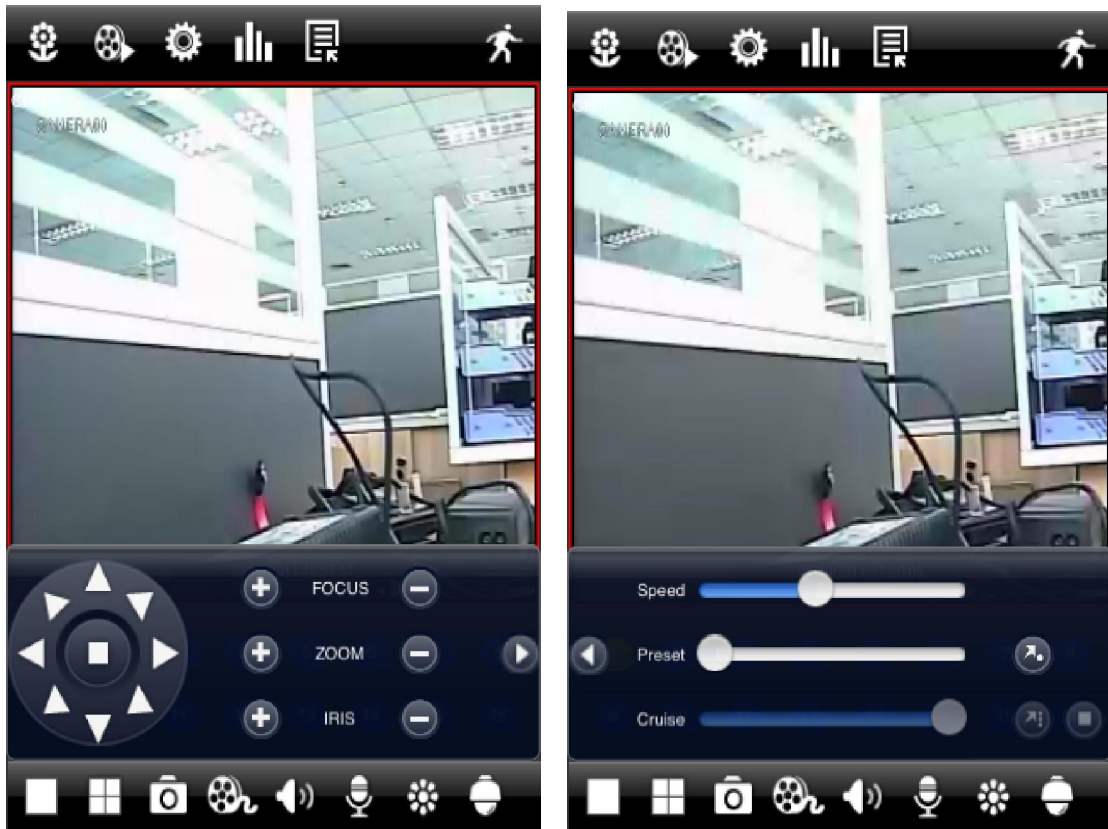


(Fig. 1)

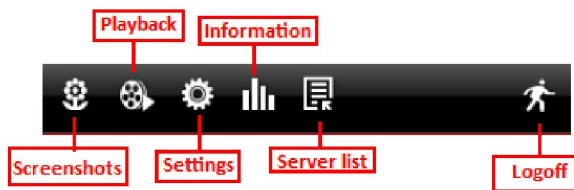
2. Live View Interface (Fig. 2)

After logged in, user will enter the live interface, in this interface, user can tap different key to implement different function.

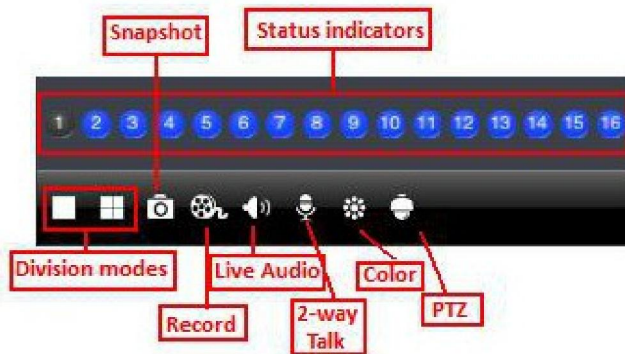




NavBar Instruction:



Quick Launch Bar Instruction:



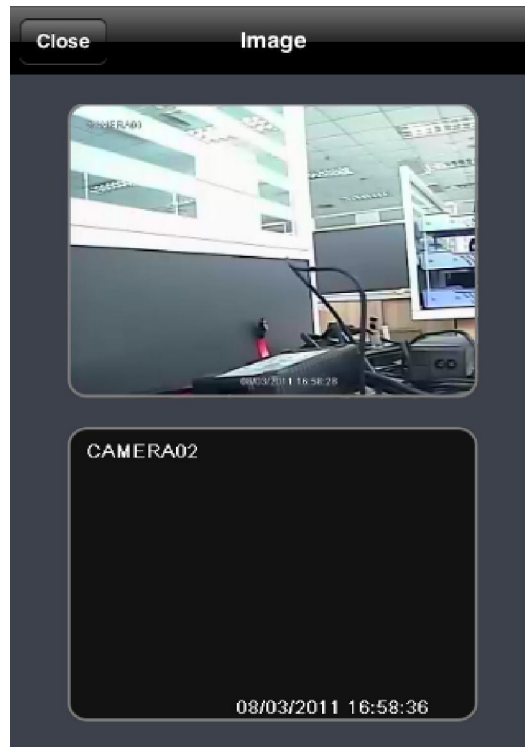
Gestures instruction:

- 1.) Tap to select the current channel, double tap the live image to switch to single channel or multi channel displaying.
- 2.) Long pressing and drag to swap the position of the live channel.

3.) Tap to get back to normal mode when in full screen

3. Snapshots interface

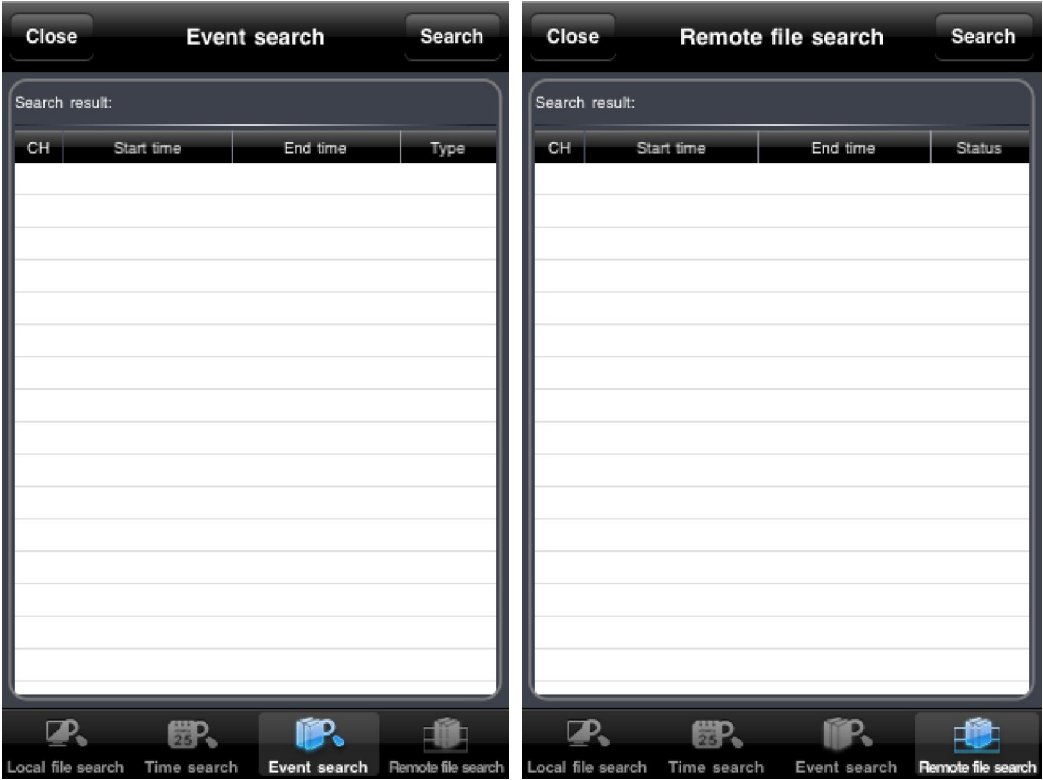
You can see the captured images in the Image interface (Fig. 3), tap the thumbnail to check the full image.



(Fig. 3)

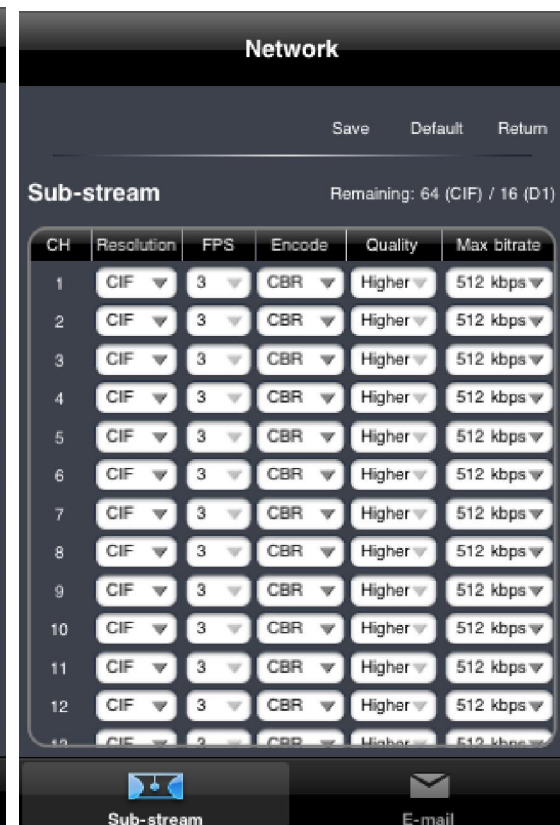
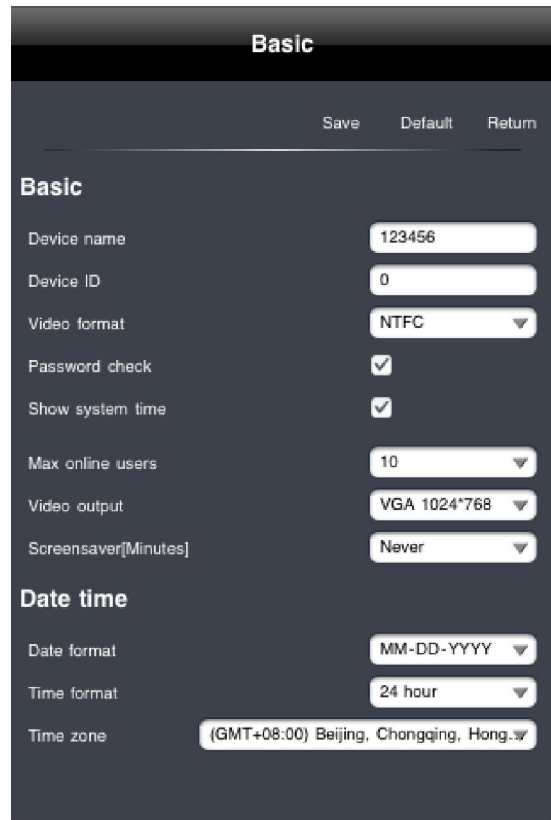
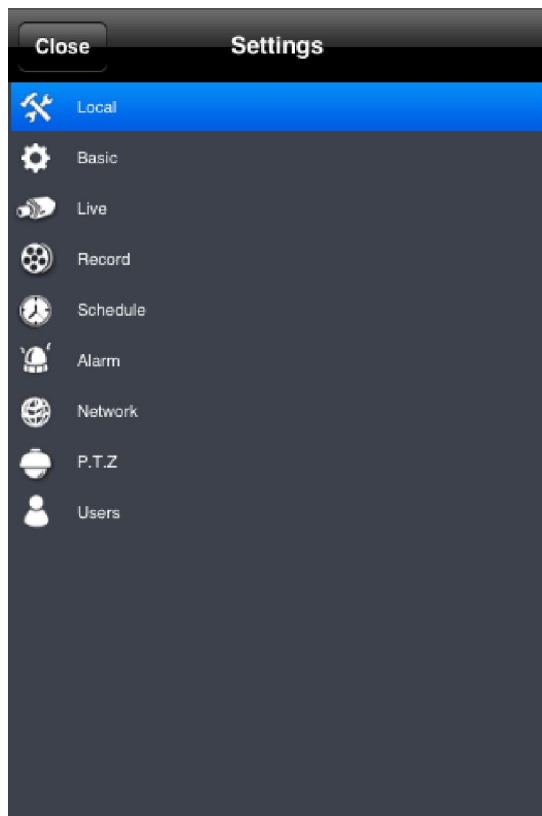
4. Playback interface(Fig. 4)

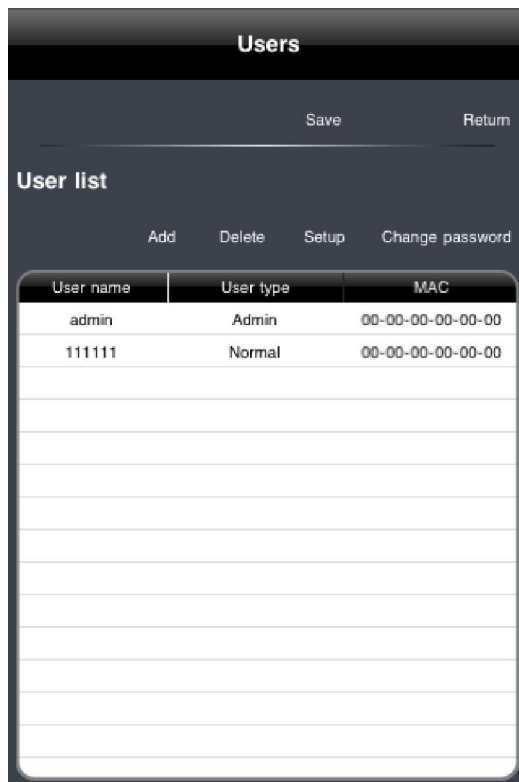
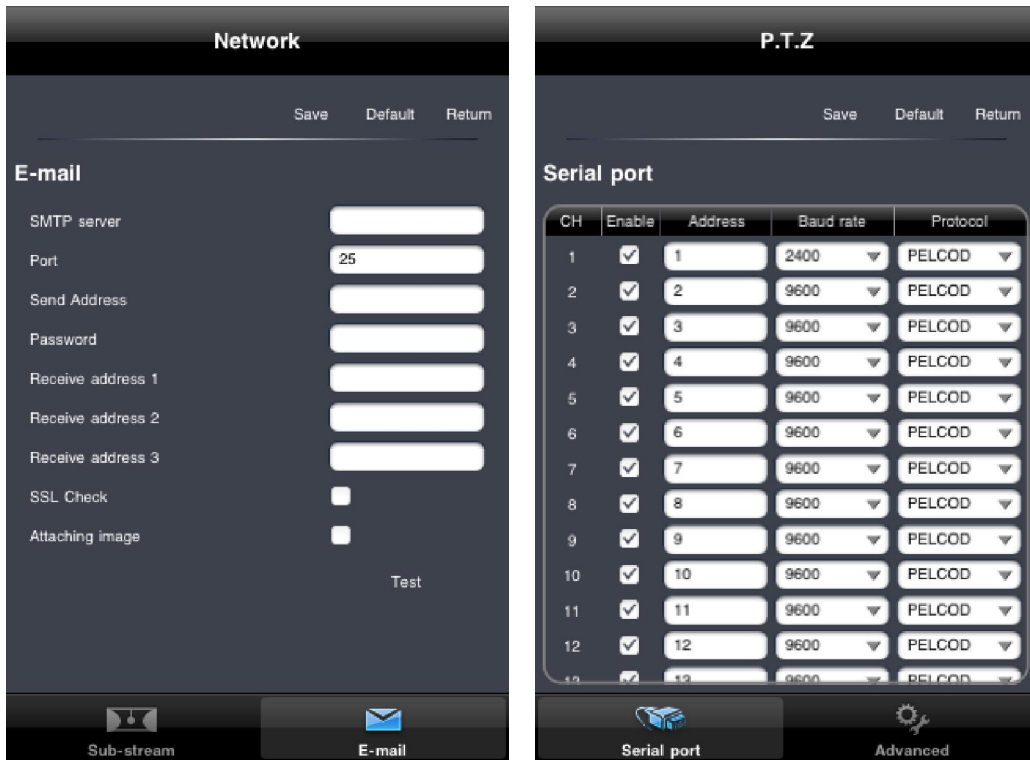




(Fig. 4)

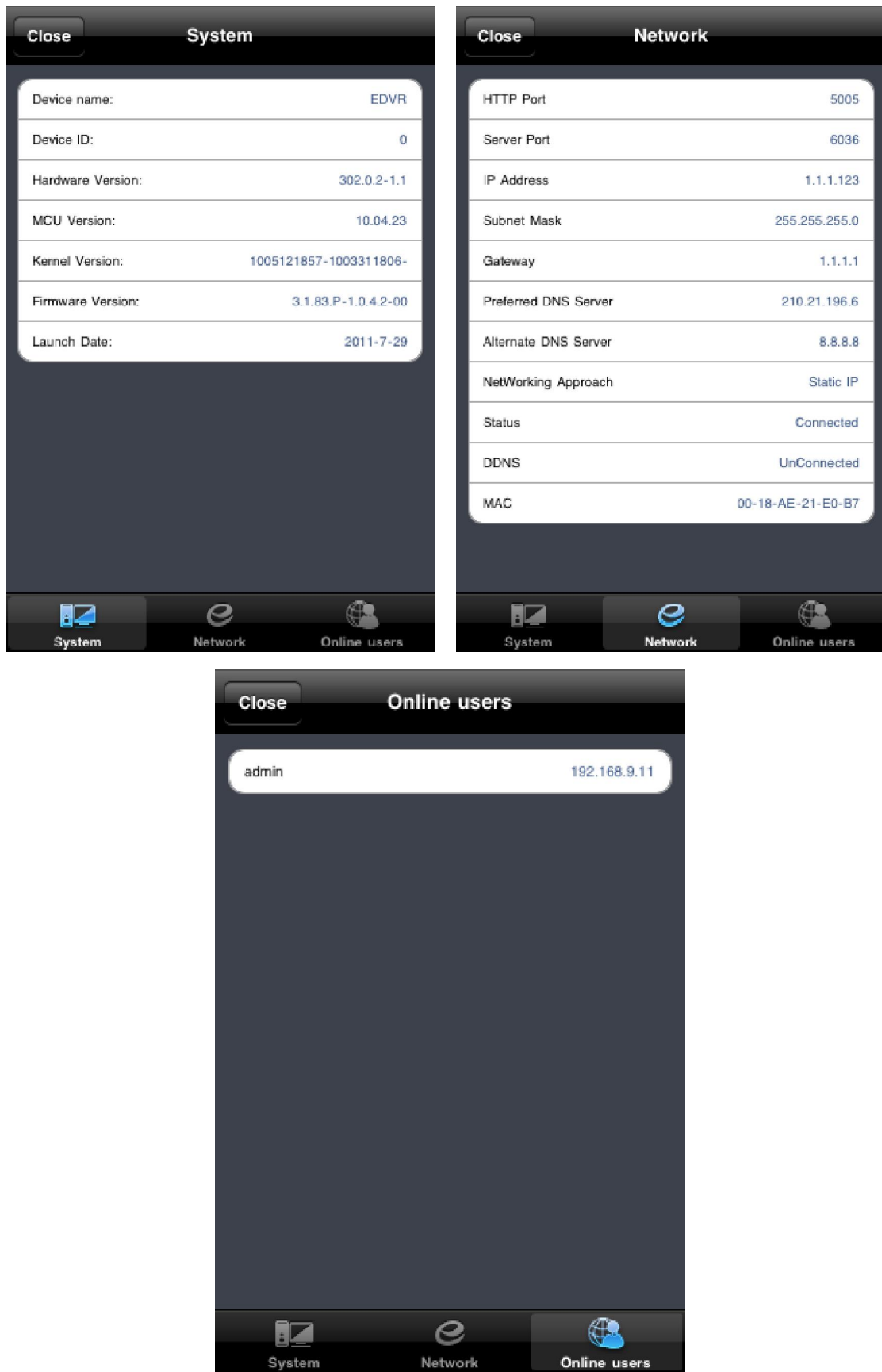
5. Configuration interface (Fig. 5)





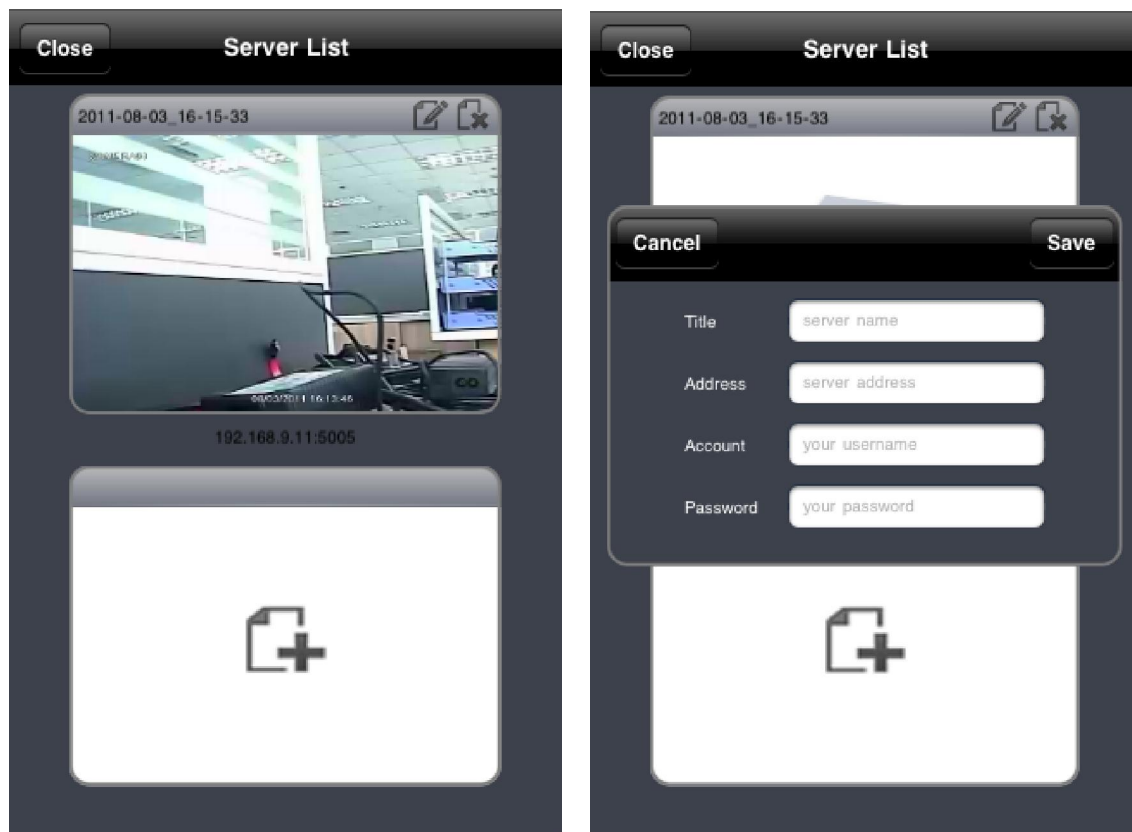
(Fig. 5)

6. Information interface(Fig. 6)



(Fig. 6)

7. Device list interface (Fig. 7)



(Fig. 7)