

HD TVI Hybrid DVR

Quick Start Guide

1. Notes

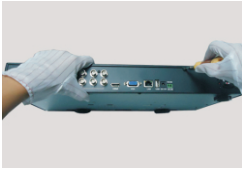
- Please read this instruction carefully for correct use of the product and preserve it for reference purposes.
- This manual is suitable for 4/8/16 CH HD TVI Hybrid DVR. All the examples and pictures used here are for reference only.
- There may be several technically incorrect places or printing errors in this manual. The updates will be added into the new version of this manual. The contents of this manual are subject to change without notice.
- This device should be operated only from the type of power source indicated on the marking label. The voltage of the power must be verified before using the same. Kindly remove the cables from the power source if the device is not to be used for a long period of time.

2. Packing Check

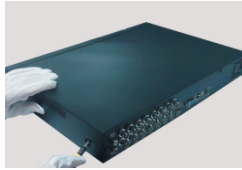
Please check the device and the accessories after getting the device. If there are any damages, shortages or defects, please contact your dealer immediately.

3. HDD Installation

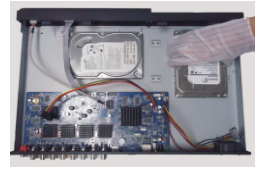
This series of the product supports 2 SATA hard drives. Please use the HDD the manufacturers recommend specially for security and safe field. Please make sure that the device is powered off before the installation.



- ① Loosen the screws on the back.



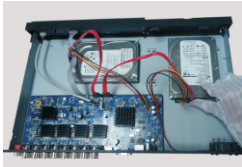
- ② Loosen the screws on the side to open the cover.



- ③ Put the HDDs onto the bottom of the machine.



- ④ Turn over the machine and secure the HDDs.



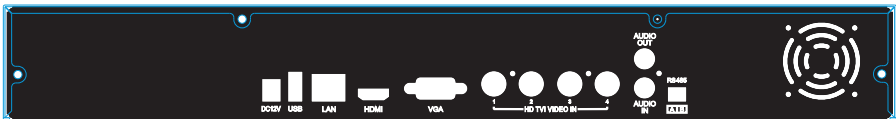
- ⑤ Connect the power and data cables.



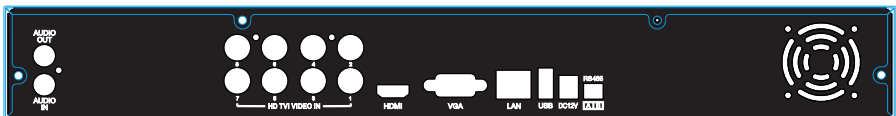
- ⑥ Install back the cover and secure it with the screws.

4. Rear Panel Instruction

The interfaces of the rear panels are for reference only.



Rear Panel for 4 CH



Rear Panel for 8 CH



Rear Panel for 16 CH

Name	Descriptions
DC12V	DV12V Power Input
USB	To connect external USB devices like USB mouse or USB storage device
LAN	Network Port
HDMI	Connect to high-definition display device
VGA	Connect to monitor
HD TVI VIDEO IN	(HD-TV1 signal) 1080P/720P, (analog signal) 960H/D1 video inputs
AUDIO OUT	Audio output; connect to the sound box
AUDIO IN	Audio Input
RS 485	Connect to keyboard speed dome; A is TX+, B is TX-
FAN	For cooling the device

5. Startup & Shutdown

► Startup:

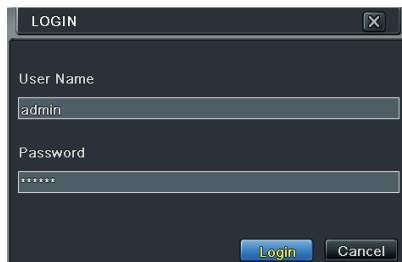
- ① Connect the monitor and the power.
- ② The device will boot and the power indicator will display blue.
- ③ A wizard window will pop up.

► Shutdown:

Go to “Main Menu” and then select “Shutdown” icon. This will bring up a shutdown window. The device will shut down by clicking “OK” button. Then disconnect the power.

6. Login

After the wizard setup, you can see the live image. Right click to pop up a menu toolbar. Click Main Menu button. This will take you to see a login box. The default username is **admin**; the default password is **123456**. Enter username and password and click “Login” button to go to the main menu setup.

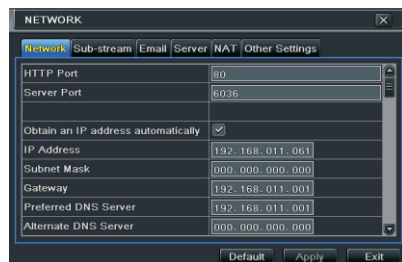


7. Network Configuration

You may add the additional 4/8 IP cameras into the device. The following will mainly introduce how to add the IP cameras via LAN/WAN.

► LAN

① Set the network of the HD TVI Hybrid DVR. Go to Main Menu→Setup→Network→Network as shown in Fig 1. Input HTTP port (the default value is 80), server port (the default port is 6036), IP address, subnet, gateway, etc. If using DHCP, please enable DHCP in both the HD TVI Hybrid DVR and the router.



(Fig 1)

② Go to Main Menu→IP Camera tab as shown in Fig 2. Click “Search” button to search the IP cameras in the same local network. If the IPC is not in the same network segment as the HD TVI Hybrid DVR, you can select the device and click “Setup” as in Fig 3 to change the IP address. (The IPC which supports the Onvif protocol may be added manually.)



(Fig 2)



(Fig 3)

③ Checkmark the device you want to add and then click “OK” button to return to the previous interface to apply the settings. “Connected” status means connecting the device successfully and you will see the live image. You may select the added device and click “Setup” button to modify channel, IP address as shown in Fig 5.



(Fig 4)

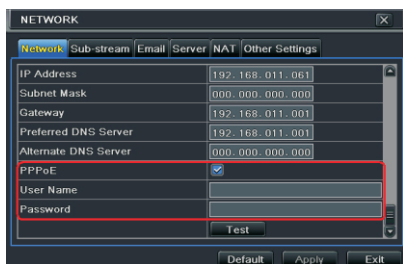


(Fig 5)

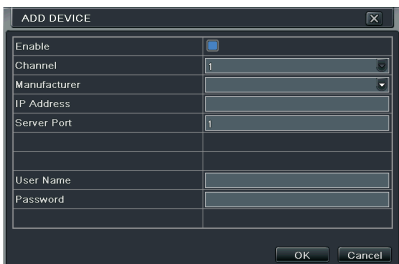
► WAN

① Set the network of the HD TVI Hybrid DVR. Go to Main Menu→Setup→Network→Network as shown in Fig 6. Input static IP address or enable PPPoE and then input the user name and password received from your ISP.

② Go to Main Menu→IP Camera tab as shown in Fig 7. Click “Add” button to add the IP cameras. Checkmark “Enable” checkbox, select channel, manufacturer and enter IP address, server port, username and password of the IP camera. Then save the settings. The network camera must be connected over WAN. And here the IP address of the IP camera must be a WAN IP address.



(Fig 6)



(Fig 7)

8. NAT

► NAT Settings

① The HD TVI Hybrid DVR shall be powered on and connected to the network.

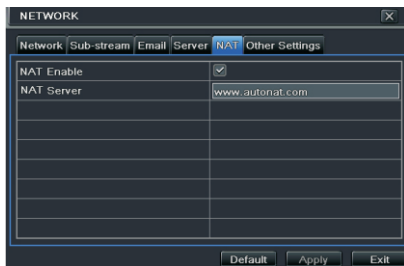
② Go to Main Menu→Setup→Network. Refer to Fig 1. You can obtain the IP address, Subnet Mask and Gateway automatically. You can also manually input them according to the actual network situation. Please make sure the network segment is the same as that of the network which is used.

③ Set the preferred or alternative DNS Server. Click “Apply” to save the parameters.

④ Go to Main Menu→Setup→Network→NAT tab. Refer to Fig 8.

⑤ Enable NAT and input the NAT Server (The default NAT Server is www.autonat.com).

⑥ Click “Apply” to save the parameters.



(Fig 8)

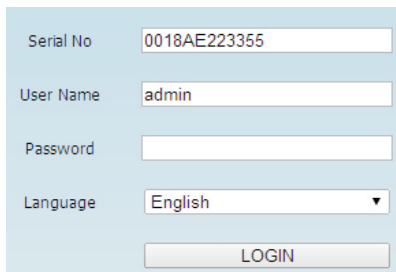
► NAT Access

After finishing the NAT settings, you can enter the NAT Server on the PC (Input <http://www.autonat.com> to go to the IE client). If you are the first time to access the NAT, the network will download the ActiveX automatically. After installing ActiveX successfully, it will pop up the following login box.


Serial No: The MAC address of the HD TVI Hybrid DVR (Go to Main Menu→Information→Network to check the MAC address of the HD TVI Hybrid DVR).

User Name: The username of the HD TVI Hybrid DVR. The default username is *admin*.

Password: The password of the HD TVI Hybrid DVR. The default password is *123456*.





9. Manual Recording

Before recording, please install and format a HDD. Right click the mouse in the live interface to pop up the following menu toolbar. Click  button to start recording.



10. Playback

Right click the mouse in the live interface to pop up the menu toolbar. Click the little triangle button beside  button to set playback time (eg. 5 minutes). Then click  button to play the record from the past 5 minutes. You may control the video by clicking the corresponding buttons, such as, forward, play/pause, stop, etc. If you want to play the record by searching the specific time and date, event or file, you may refer to the HD TVI Hybrid DVR User Manual for details.

