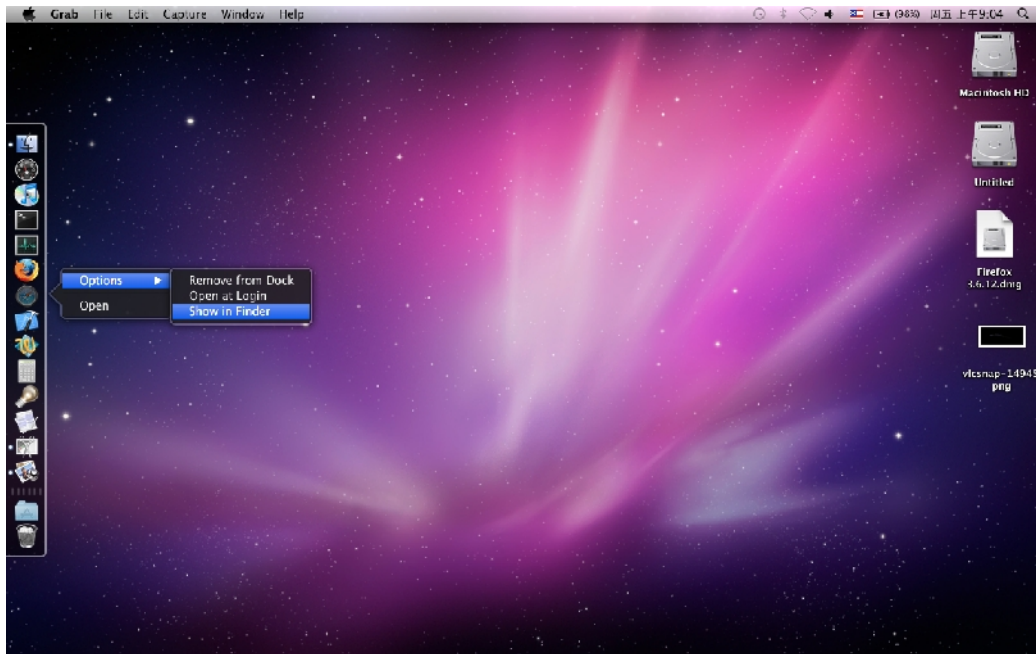
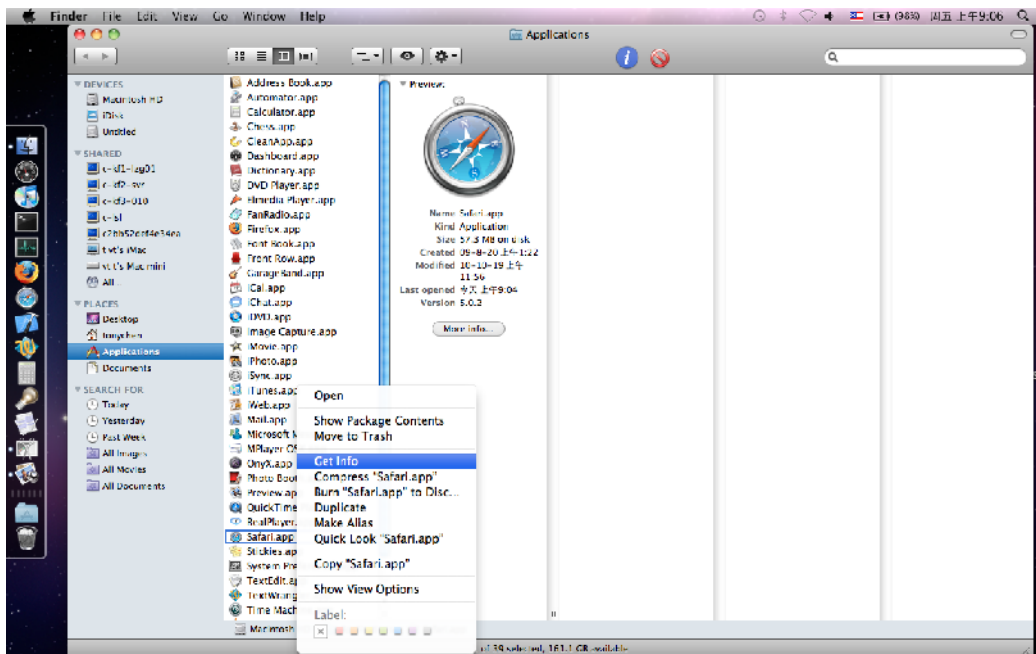


Instruction of the Safari Client Installation

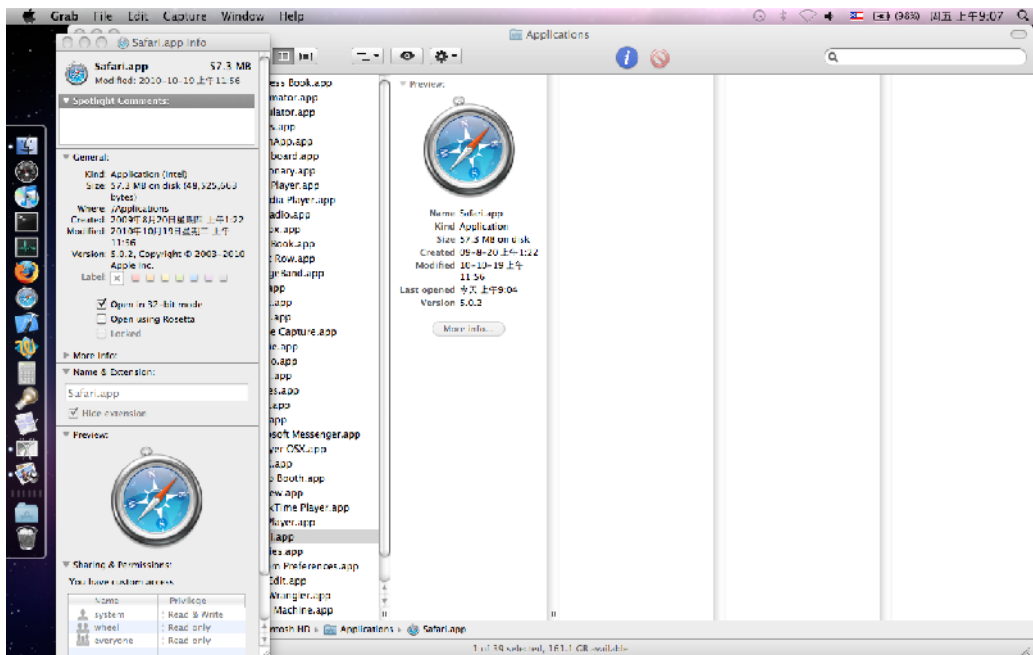
1) Since the current client plug-in can only be run in 32-bit, so the Safari browser needs to be set to run in 32-bit. Please follow below steps:



1. Right click on Safari, click “Show in Finder”

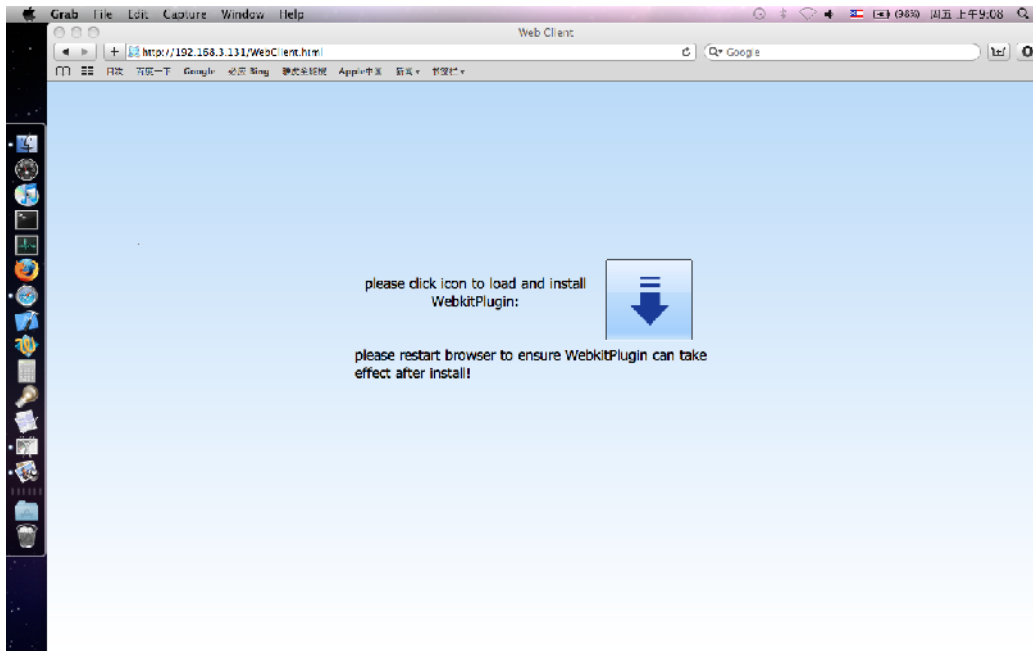


2. Right click on Safari in Finder, and click “Get Info” in the menu.

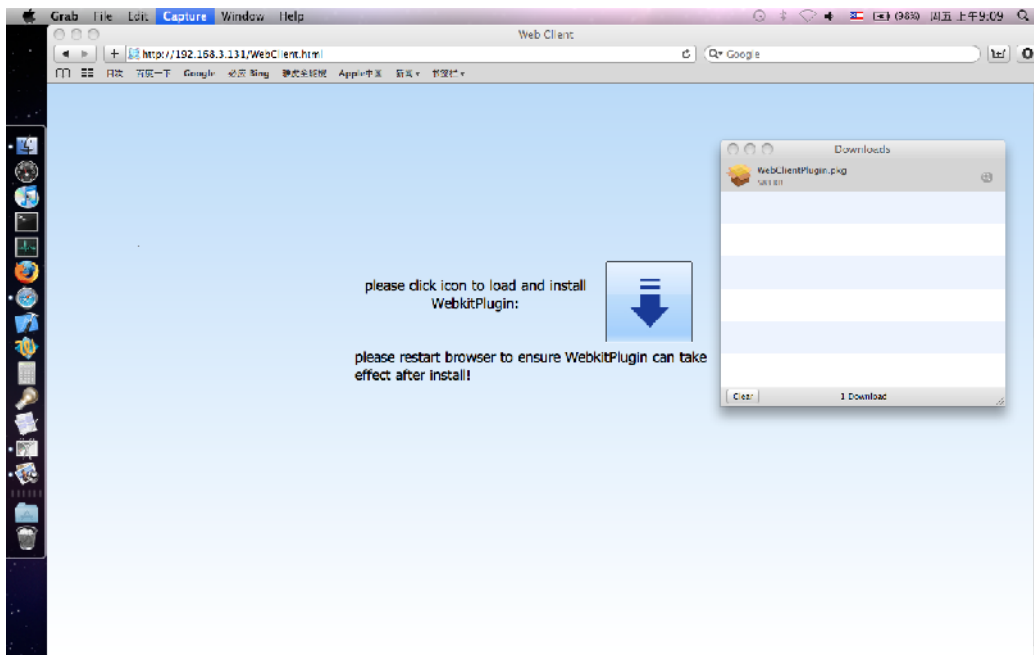


3. Then the Safari's info window will pop up, please check the option for "Open in 32-bit mode".

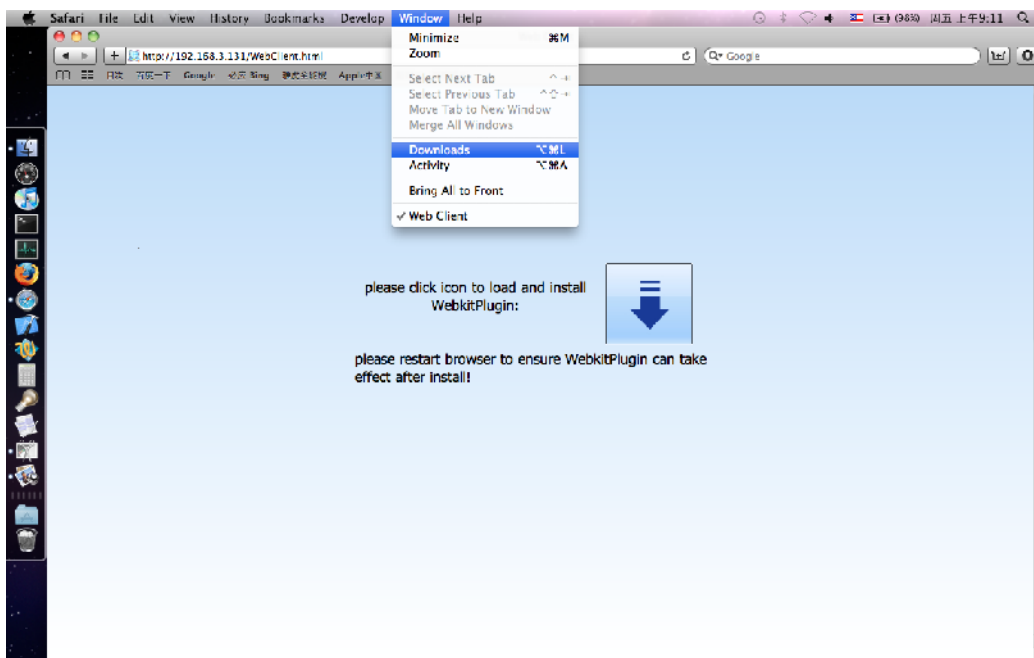
2) Please follow below steps to download and install the plug-in:



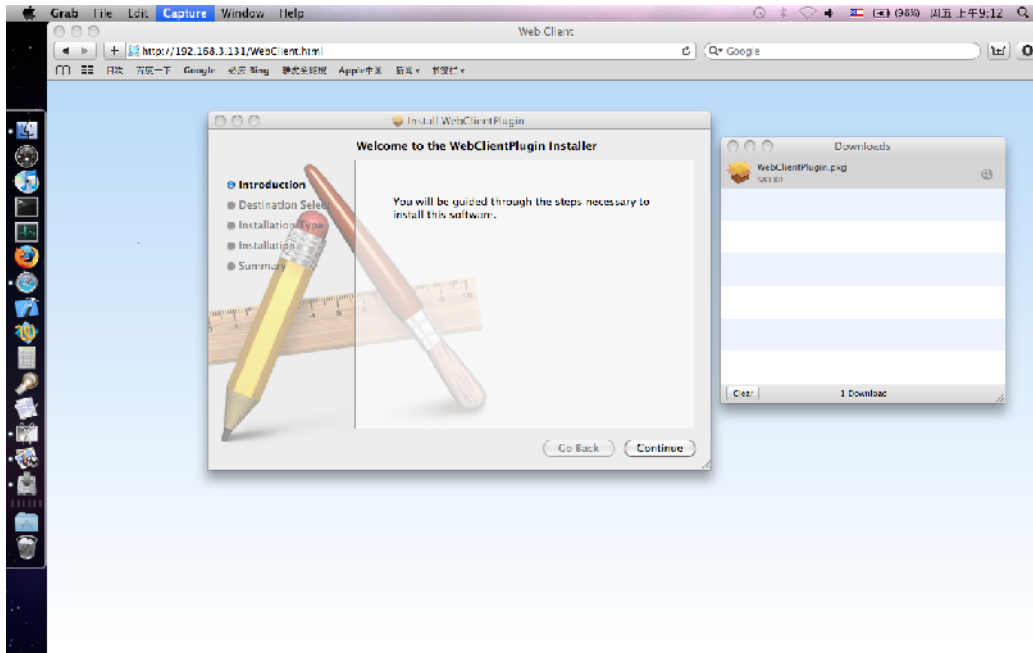
1. Open Safari browser, input the device's IP address, it will display the download interface of the plug-in when visit the DVR for the first time or the firmware version has been changed.



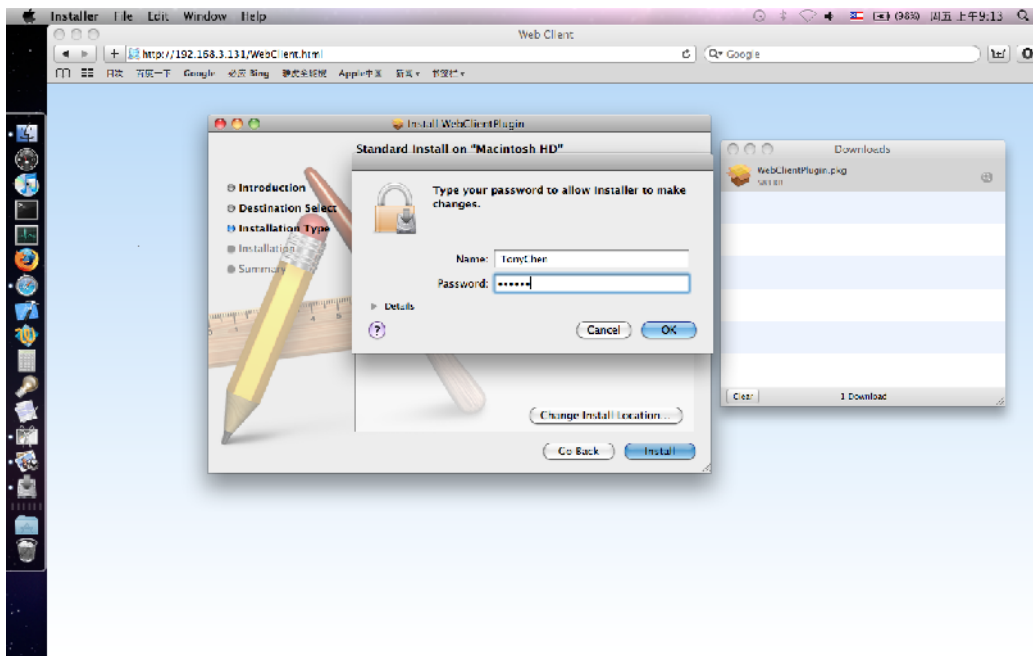
2. Click the icon to download the installation package.



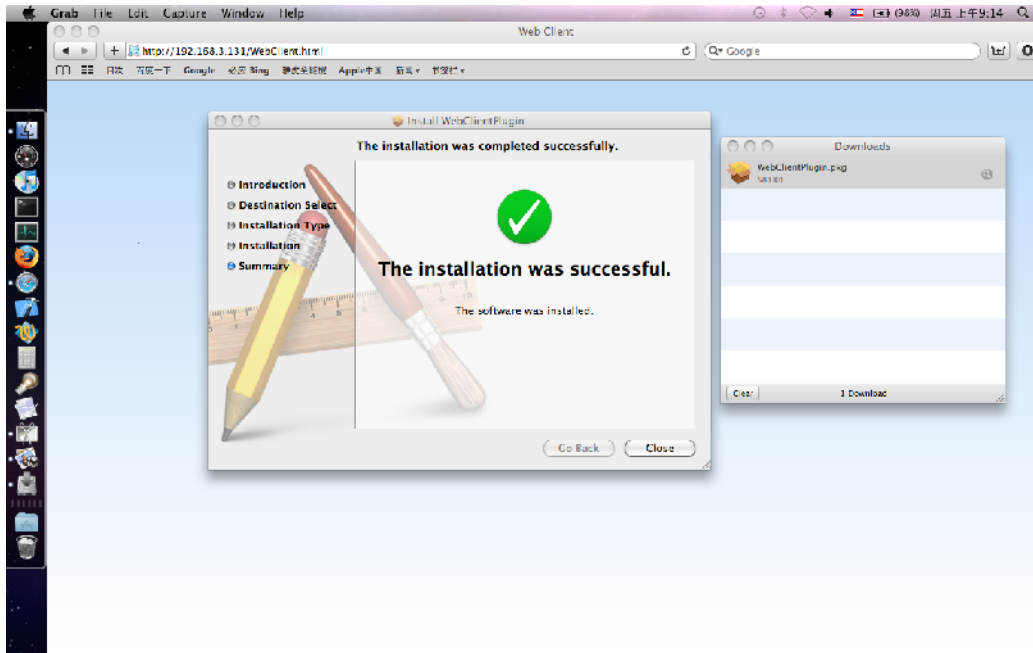
3. If the download window didn't pop up automatically, you can click the "Downloads" in the "Window" menu of the browser.



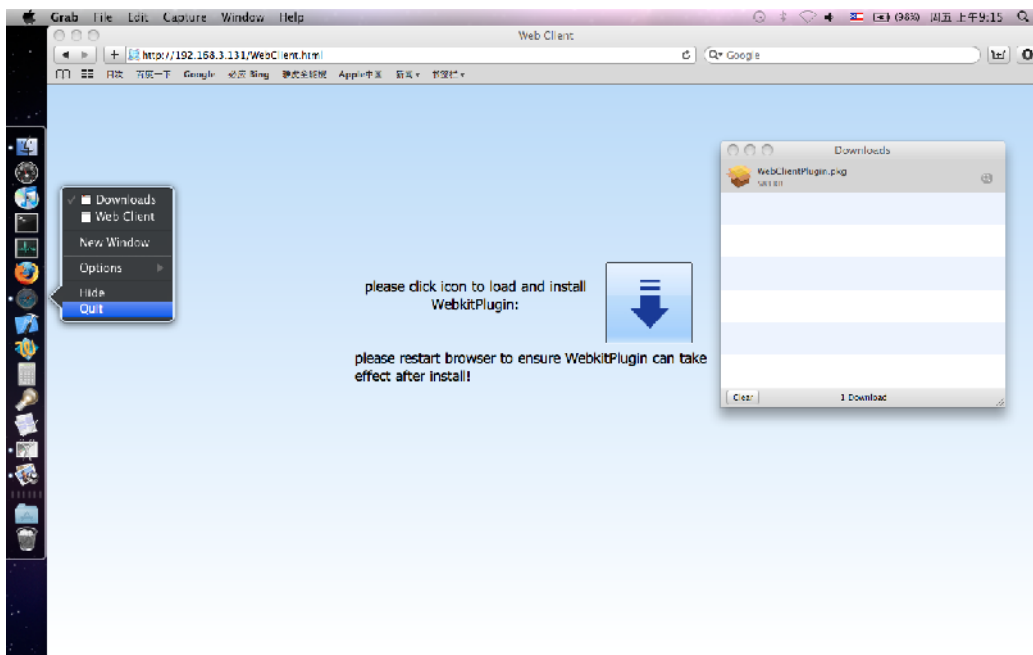
4. Double click the downloaded package, click “Continue”, keep clicking on “Next” with the default settings.



5. It will ask you to input the administrator’s username and password in the installation.



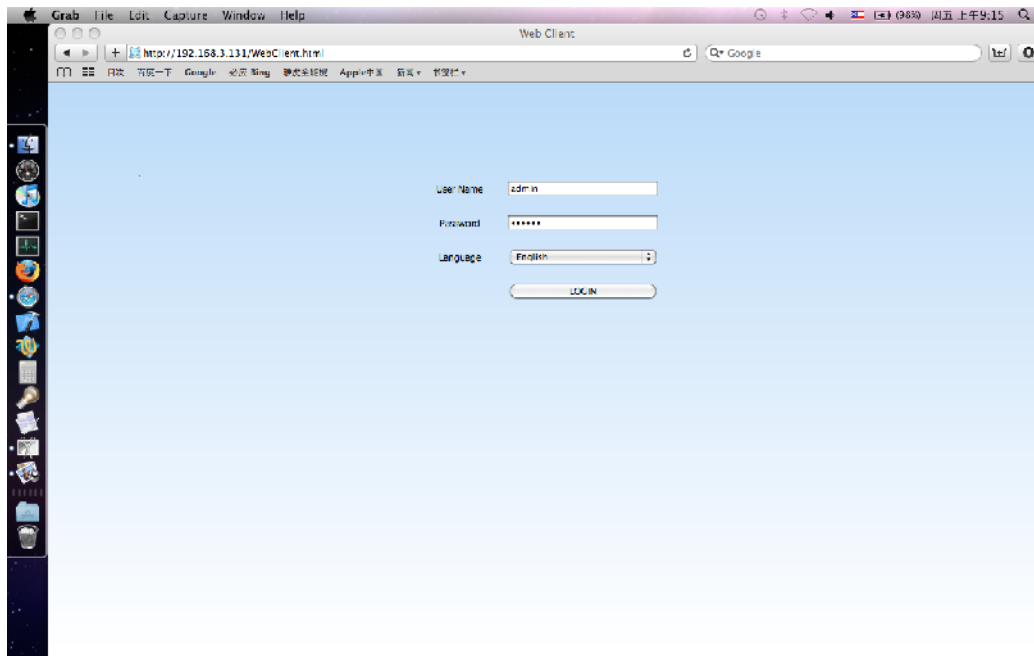
6. Installation completed.



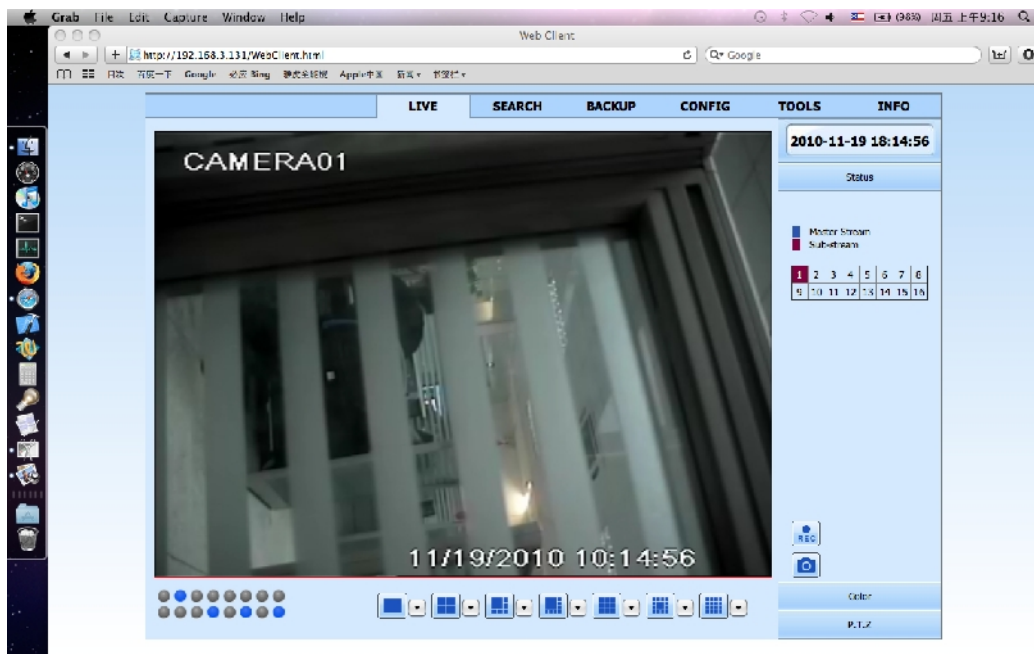
7. Right click on Safari, click "Exit"

Notice: The plug-in will get to work only when you exit the browser and run again.

3)Run, please follow below steps:



1. Open Safari; input the device's IP address, username and password.



2. Login succeeded, then you can do the operations just the same as in IE.